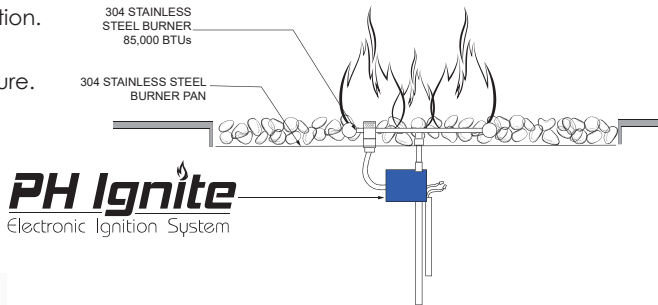


SMART, SAFE, CONVENIENT

Hassle-Free Ignition, Zero Worries

- 12 VAC Inlet Power**
Compliant with National Electrical code 2014, article 68.
May be installed within five feet of pool water.
- Weatherproof/Anti-Corrosion Enclosure**
Protects internal components from harsh weather and is built to last.
- Electronic Ignition**
Convenient fire feature lighting and instant flame monitoring.
- Hot Surface Ignition**
Robust and reliable ignition.
- Waterproof Pilot Connector**
Corrosion-proof electrical connection.
- Compact Design**
Conveniently fits into your fire feature.



PRISM HARDSCAPES
Outdoor Living Products

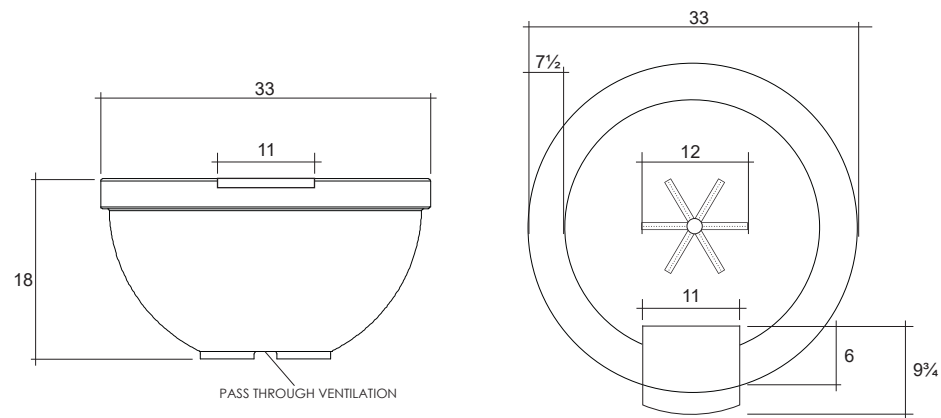


Full Product Catalog

Verona

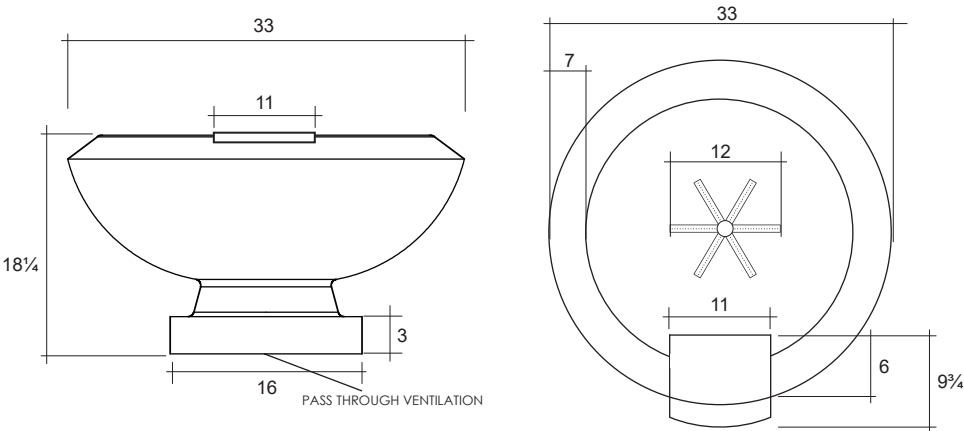
Sorrento

SPECIFICATIONS	
Diameter	33"
Height	18"
Water Flow	15 GPM
Connection	¾" NPT
Burner Size	12" 6-spoke/65,000-85,000 BTUs (ML/E)
Weight	196 lbs.
Fuel Source	Liquid Propane or Natural Gas
Ignition	PH-Ignite (Electronic)/Key Valve (match lite)
Material	Glass fiber reinforced concrete
Media	Lava rock



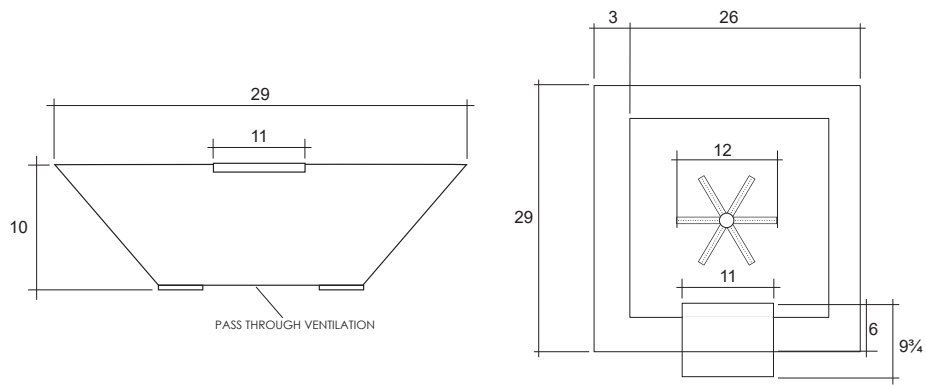
Toscano

SPECIFICATIONS	
Diameter	33"
Height	18 ¼"
Water Flow	15 GPM
Connection	¾" NPT
Burner Size	12" 6-spoke/65,000-85,000 BTUs (ML/E)
Weight	180 lbs.
Fuel Source	Liquid Propane or Natural Gas
Ignition	PH-Ignite (Electronic)/Key Valve (match lite)
Material	Glass fiber reinforced concrete
Media	Lava rock



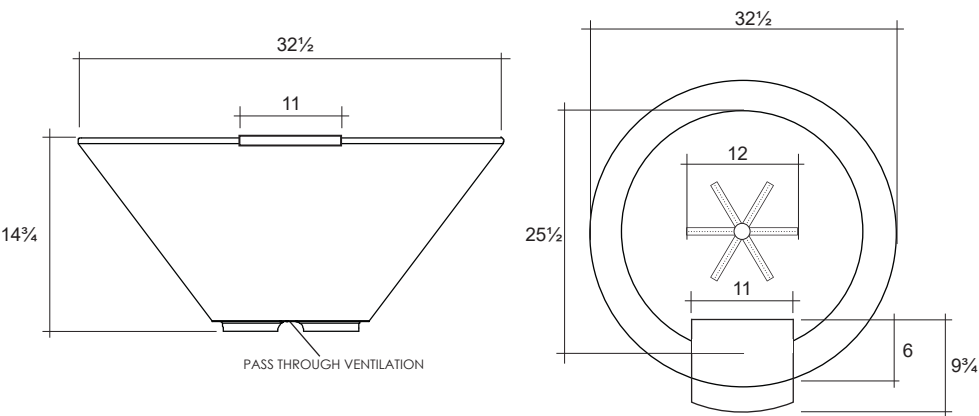
Lombard-P

SPECIFICATIONS	
Length/Width	29"
Height	10"
Water Flow	15 GPM
Connection	¾" NPT
Burner Size	12" 6-spoke/65,000-85,000 BTUs (ML/E)
Weight	90 lbs.
Fuel Source	Liquid Propane or Natural Gas
Ignition	PH-Ignite (Electronic)/Key Valve (match lite)
Material	Glass fiber reinforced concrete
Media	Lava rock



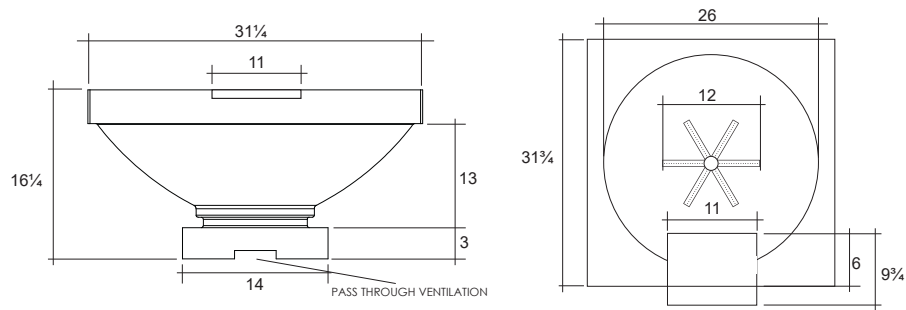
Verona

SPECIFICATIONS	
Diameter	32 ½"
Height	14 ¾"
Water Flow	15 GPM
Connection	¾" NPT
Burner Size	12" 6-spoke/65,000-85,000 BTUs (ML/E)
Weight	140 lbs.
Fuel Source	Liquid Propane or Natural Gas
Ignition	PH-Ignite (Electronic)/Key Valve (match lite)
Material	Glass fiber reinforced concrete
Media	Lava rock



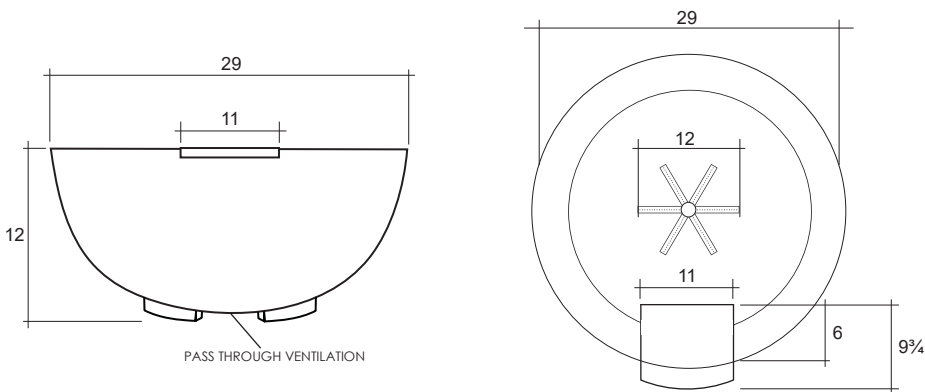
Ibiza

SPECIFICATIONS	
Length/Width	31 ½"
Height	16 ½"
Water Flow	15 GPM
Connection	¾" NPT
Burner Size	12" 6-spoke/65,000-85,000 BTUs (ML/E)
Weight	176 lbs.
Fuel Source	Liquid Propane or Natural Gas
Ignition	PH-Ignite (Electronic)/Key Valve (match lite)
Material	Glass fiber reinforced concrete
Media	Lava rock



Moderno 2-P

SPECIFICATIONS	
Diameter	29"
Height	12"
Water Flow	15 GPM
Connection	¾" NPT
Burner Size	12" 6-spoke/65,000-85,000 BTUs (ML/E)
Weight	110 lbs.
Fuel Source	Liquid Propane or Natural Gas
Ignition	PH-Ignite (Electronic)/Key Valve (match lite)
Material	Glass fiber reinforced concrete
Media	Lava rock



Fire Media

LAVA ROCK (Standard)



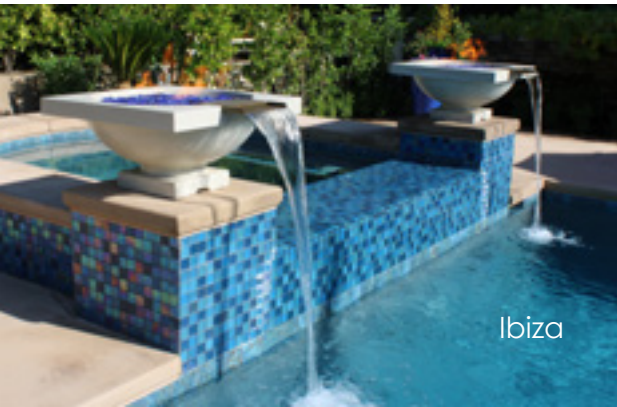
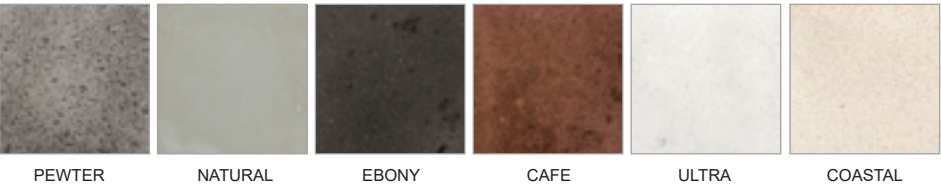
TUMBLLED LAVA ROCK



FIRE GLASS



FIRE FEATURE COLOR OPTIONS



Ibiza

We believe in spaces that are designed for living, making memories, and enjoying life.